



Bytec Medical  
[www.bytecmedical.co.uk](http://www.bytecmedical.co.uk)

## Bytec Medical

Bytec medical provide innovative products and services to healthcare professionals, integrators and OEM partners. Our designs and products facilitate the use of computer equipment within the healthcare industry.

Part of the Bytec group of companies, Bytec Medical has a UK Head office, in-house Industrial design and engineering resources with access to economic production facilities in Taiwan.

Bytec Group operates an ISO 9001:2000 accredited quality management system ensuring effectiveness throughout our operations.

Whatever your requirements,

Bytec Medical can help.



Smart-Cart™  
Mobile Computer Platforms



Medi-Key™  
Intelligent Data Entry



EQi-Cart™  
Mobile Equipment Cart



CMS  
Custom Mounting Solutions



Medi-Stand™  
Non-powered Mobile Mounting Solutions



Custom Design & Development  
Product Design and Customisation

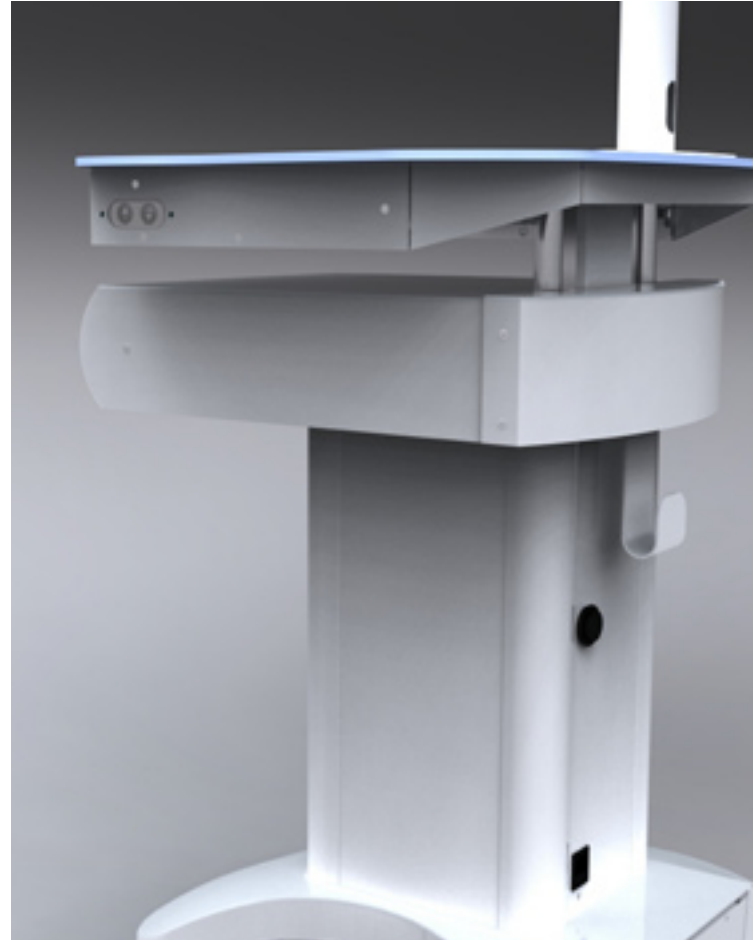


## Smart-Cart™

Our Smart-Cart™ is the perfect example of practicality and ingenuity. Reliable, sturdy and secure, the Smart-Cart™ is also flexible, highly manoeuvrable and ergonomically designed.

Key features:

- Silver based Anti-Microbial protection.
- Lightweight construction for excellent manoeuvring.
- Intelligent power management & diagnostic system.
- Up to 9 hrs battery run time. AC/DC Power supply also available.
- Integrated cable management.
- Eco-friendly recyclable construction.



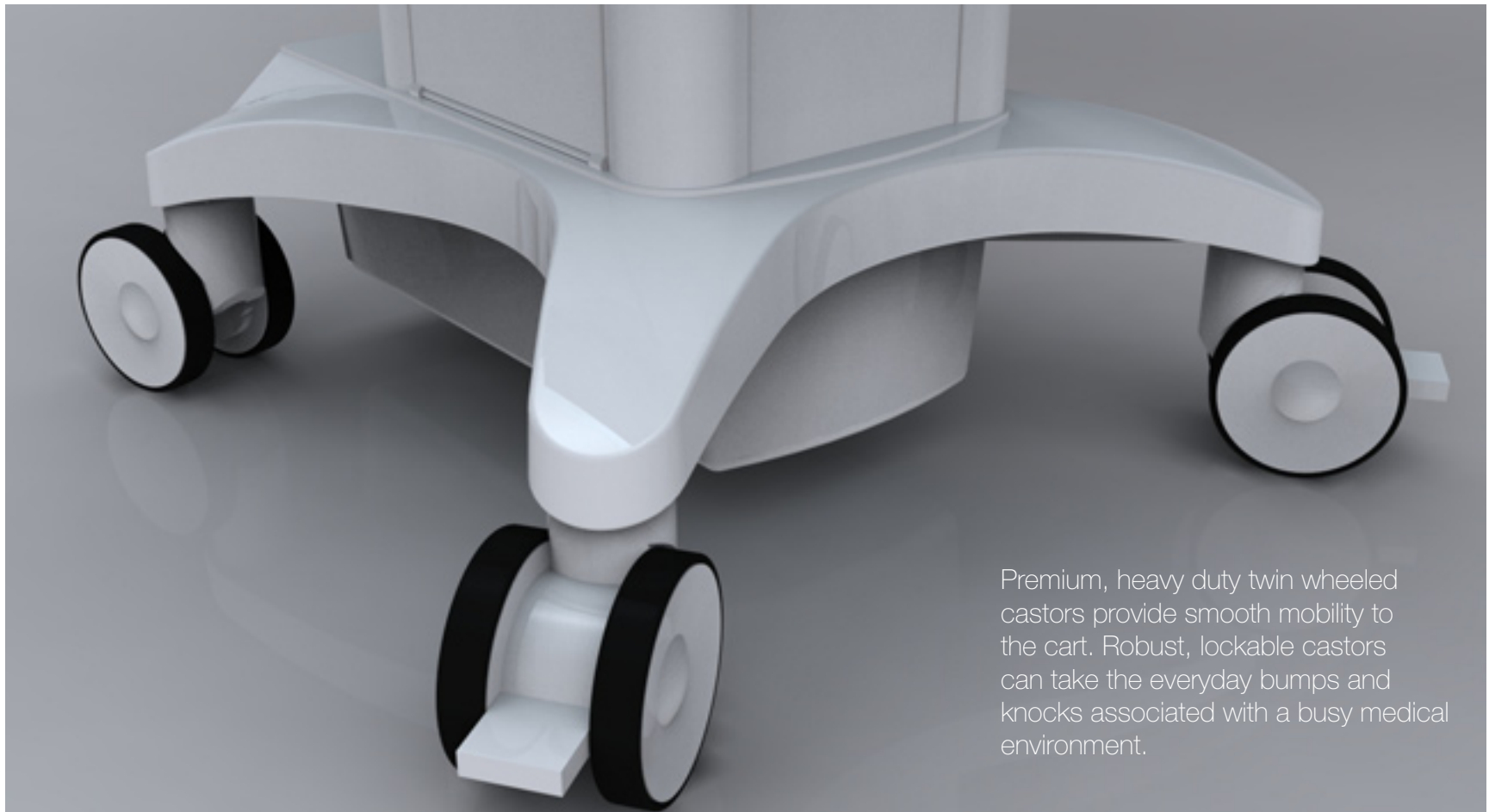


Integrated pull out tray will hold a full size PC keyboard. Shown above with the Medi-Key™ wireless keyboard to provide an improved solution to infection control.

## Smart-Cart™

Fingertip control height adjustment raises and lowers the top work surface and screens. This customisation allows the user to set up their most comfortable working position.





Premium, heavy duty twin wheeled castors provide smooth mobility to the cart. Robust, lockable castors can take the everyday bumps and knocks associated with a busy medical environment.

## Medi-Key™

Wireless keyboard designed for use in most areas of hospital and medical environments. The Medi-Key™ helps to prevent the spread of infection with its innovative Human Computer Interface.

Easy cleaning and the use of a Silver based inorganic anti-microbial agent, reduces the spread of infection from cross-contamination.

Manufactured from hypoallergenic latex free silicone rubber.

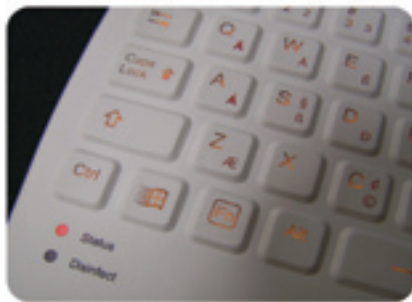
Low height keys with smooth contours make it easy to clean.

Keys can be backlit and available in a range of colours (on agreement).

In-built 10m wireless USB.



The smooth contours of the low height keys and their 'collapse flat' design make it very easy to clean in seconds. Cleaned without removal from the terminal and without immersion, reduces the spread of infection from cross-contamination.





## Medi-Key™

Bytec proudly manufacture and supply our Medi-Key™ wireless keyboard to our OEM partners

We can accommodate custom requests (subject to a minimum order) for supplying units in different colours and with alternate branding.





## Innovative Docking System

The keyboard can be supplied either as a wired USB or as a wireless USB device using its integrated wireless capabilities.

Powered by an internal lithium polymer battery when used wirelessly, it will have a minimum operating time of 6 hours fully charged and will be re-charged automatically via the USB port on the terminal.

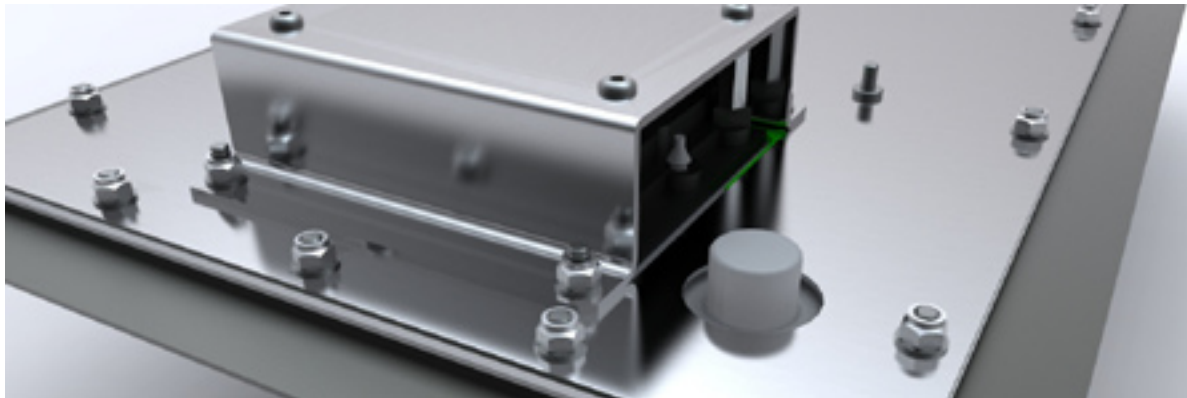


Kiosk II™ can be supplied in its own housing or as a panel mounted device.

## Kiosk II™

High visibility key caps, custom backplate colours, illuminated key characters and choice of tracker-ball devices are some of the key elements which can be specified to suit your requirements.

Alongside our standard range of Kiosk II™ keyboards with standard language layouts, we can work with you to produce a keyboard which has custom key legends, high visibility or backlit keys and alternate material finishes to cater for specific requirements.



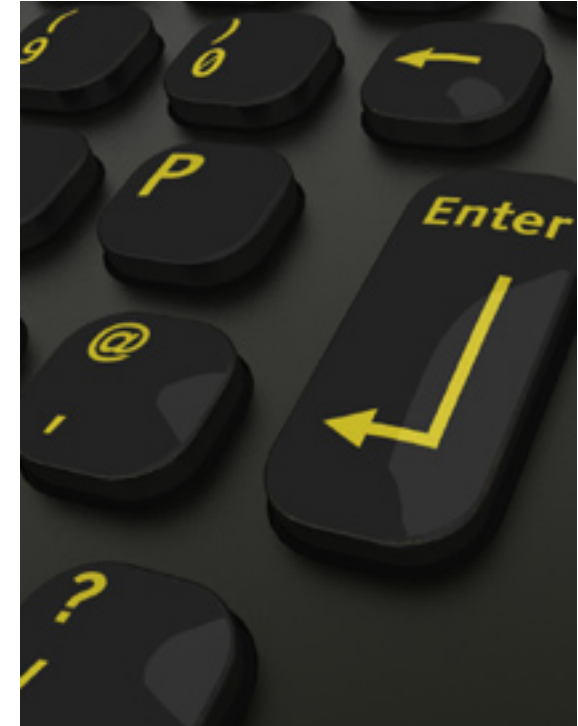
### Innovative cleaning system

The keyboard is IP65 rated against water ingress (housing dependant). In the event of a liquid spill over the front of the keyboard there is an innovative valve at the back of the keyboard which can be pierced and used as a drain. This allows for a complete flush through for the keyboard



### Tracker-ball

A customisable option. Stainless steel, plastic coated or coloured phenolic tracker balls are available. An inorganic silver ion based anti-microbial additive can also be specified for this part, increasing levels of user hygiene. Tracker ball can be specified to be IP68.



Rubber keypad with hard wearing Epoxy Resin key caps are both tactile and offer a long service life. Comfortably warm to the touch and easy to type on, the Kiosk II's keys are user friendly and can be printed to your own specific colour scheme (subject to agreement). Keys have 2-3mm travel.

## Medi-Stand™

POC mounting adapter range.

Fixed height and variable height options.

Integrated cable management.

Custom medical device adapters.

Range of accessories.

Customisable height and build configurations.

Sturdy cast Aluminium base and dual wheel casters.

Silver based anti-microbial paint provides extra protection for infection control.

Easy to clean design.

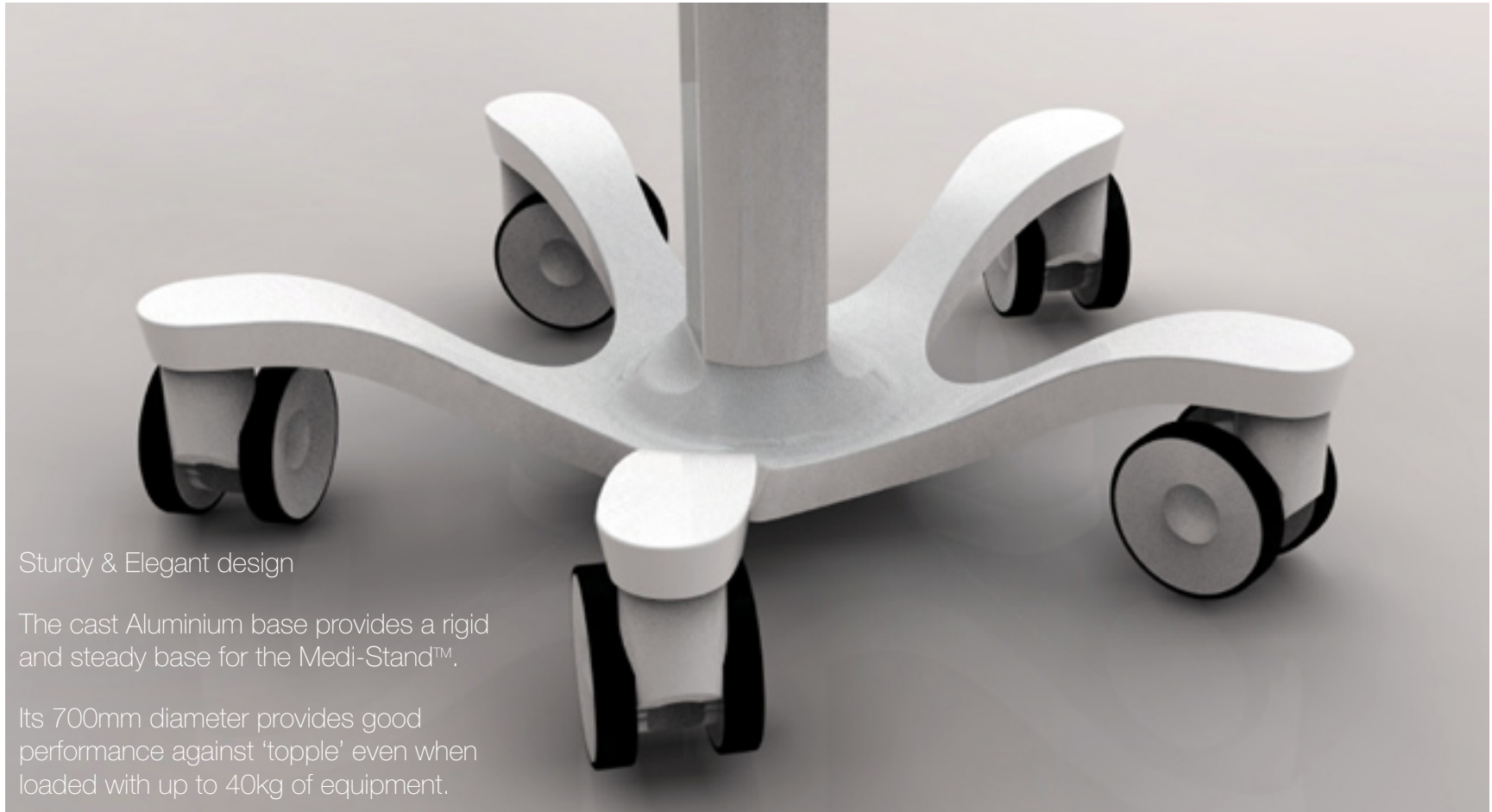




Integrated work surface and Panel PC.  
Available as a fixed height unit or with  
assisted rise & fall mechanism.



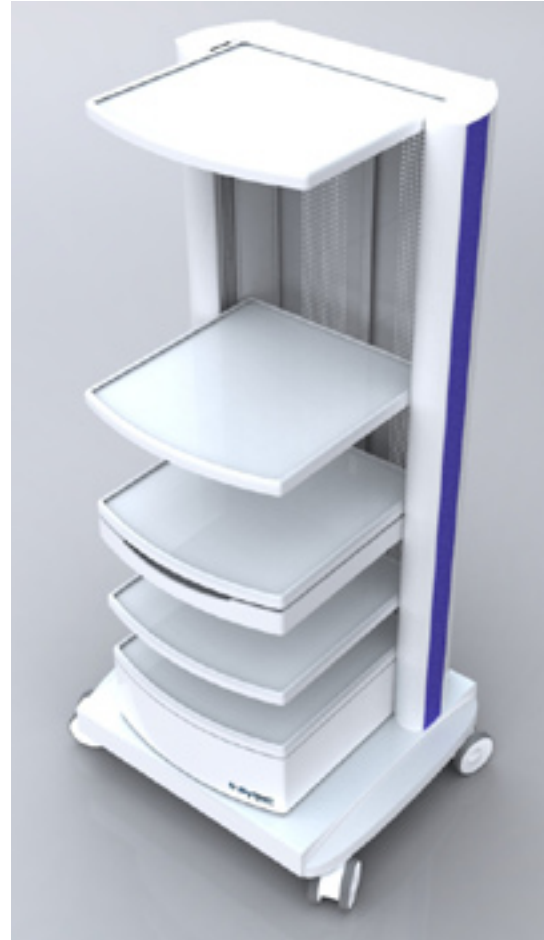




Sturdy & Elegant design

The cast Aluminium base provides a rigid and steady base for the Medi-Stand™.

Its 700mm diameter provides good performance against 'topple' even when loaded with up to 40kg of equipment.



## EQi-Cart™

Launch Date – End of Q1 2010

Versatile Mounting solution

Provides a range of medical grade power options.

Highly customisable, modular design allows user to configure their perfect solution.

Integrated cable management.

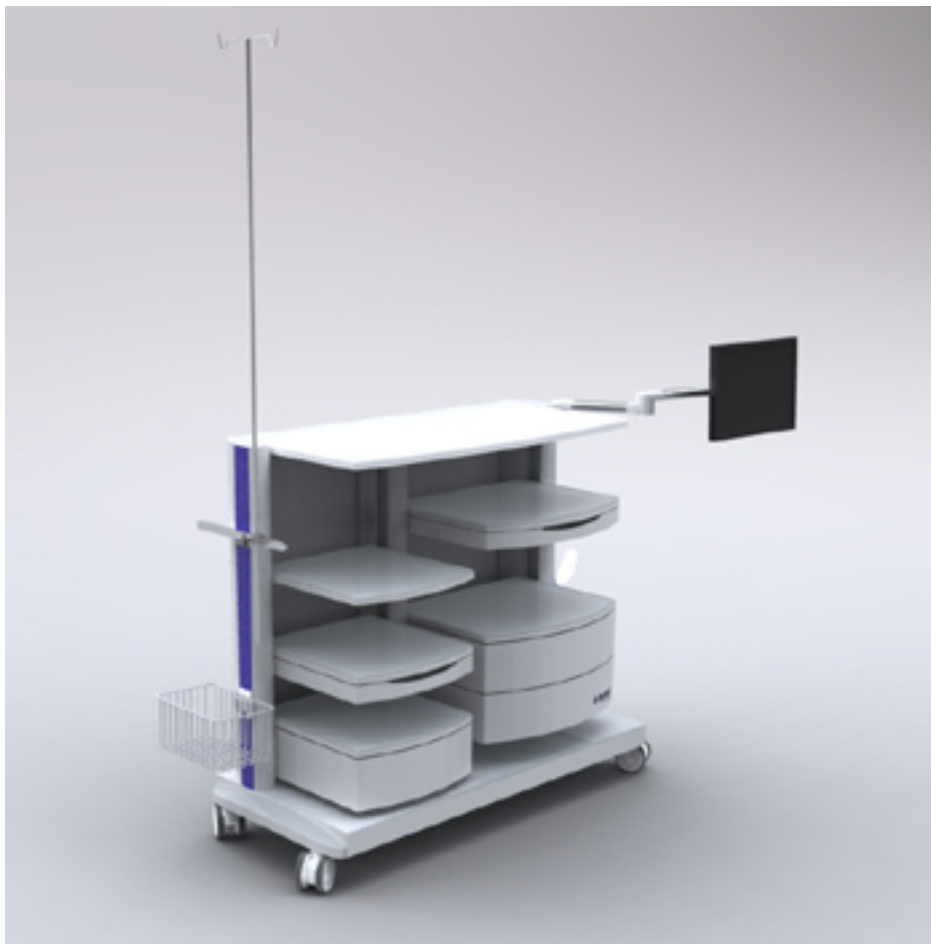
Side mounted accessories can be secured along the full height of the unit.

## EQi-Cart™

Premium, heavy duty twin wheeled castors provide smooth mobility to the cart.

Robust, lockable castors can take the everyday bumps and knocks associated with a busy medical environment.

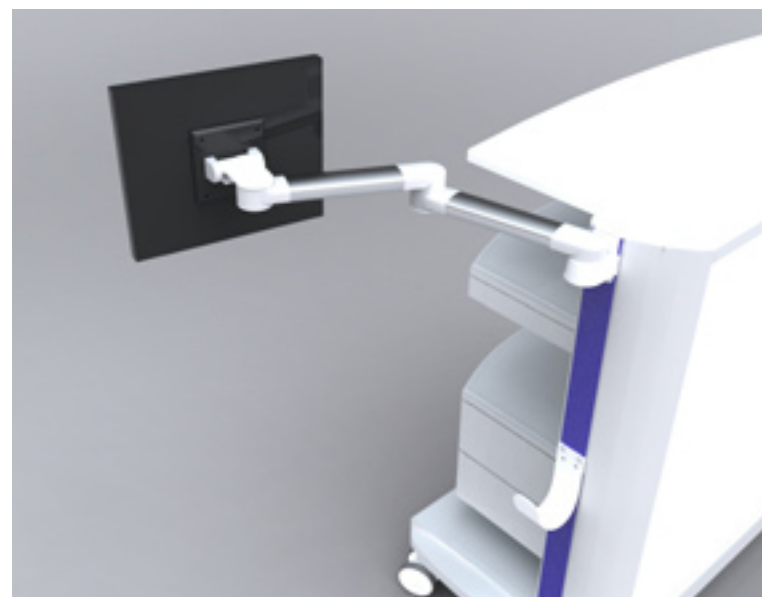




## EQi-Cart™

Launch Date – End of Q1 2010

Part of the EQi-Cart™ family range of workstations. Wider format layout offers improved desk space and storage whilst maintaining high degree of mobility.







## Fixed Height Desk stand

Designed for the POC display range.

Silver based Anti-microbial paint.

Easy to clean design.

Lockable tilt adjustment.

Attractive and robust construction.

Easy to use cable management.







## Adjustable Desk Stand

Launch Date - End of Q1 2010

With the same core features as the fixed height unit but with the additional scope to raise and lower the screen.



## Mounting Systems

Many installations require the use of arms and mounts for the positioning and use of a range of equipment from printers and displays to bedside terminals.

We understand that standard solutions are not always good enough, so Bytec Medical provides a customisation service to bridge the gap.

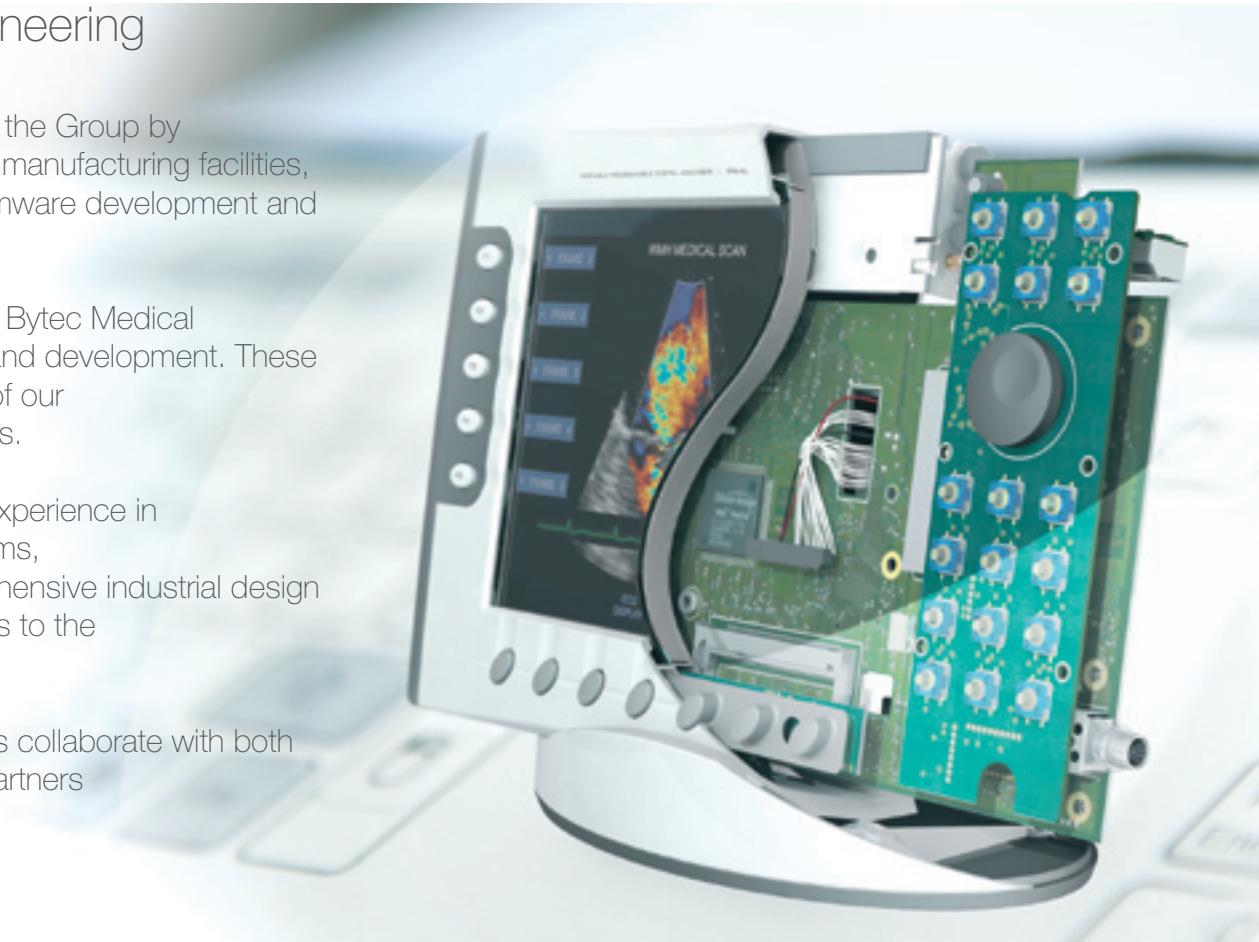
## Product Design & Engineering

Bytec Medical is supported within the Group by in-house design, engineering and manufacturing facilities, including 3D CAD, electronics, firmware development and assembly.

From concept to full manufacture, Bytec Medical constantly re-invests in research and development. These benefits are extended in support of our client's own product developments.

With access to over 30 years of experience in Human Machine Interfacing systems, Bytec Medical provides a comprehensive industrial design and product development services to the medical industry.

Our engineering and design teams collaborate with both local and international specialist partners and suppliers.







Unit 1, Perrywood Business Park  
Honeycrook Lane, Salfords,  
Redhill, Surrey RH1 5DZ

Tel: +44 (0) 1737 378 808  
Fax: +44 (0) 1737 378 801  
[www.bytecmedical.co.uk](http://www.bytecmedical.co.uk)